

Analysis of Aldehydes in Water using Post-column Derivatization by High Performance Liquid Chromatography

Introduction

It is now a growing concern that aldehydes such as formaldehyde, acetaldehyde may pollute air and environmental water in lake, reservoir, river etc. in environment. Therefore, the aldehydes are subjected to regulations by Air Pollution Control, Water Supply and Offensive Odor Control Acts in Japan.

Pre-column derivatization with 2,4-DNPH is known as a method to measure aldehydes in HPLC, however, the pretreatment of samples such as collection-condensation or extraction is required. JASCO introduced the method for the analysis of formaldehyde, acetaldehyde in water by post-column fluorescence derivatization using 1,3-Cyclohexanedione as derivatization reagent, which did not require such pretreatment.

In this report, we extended the applicability of the method to other aldehydes by optimizing the derivatization conditions.

Keyword: Aldehydes, 1,3-Cyclohexanedione, Post-column Derivatization, Shodex RSpak KC-8116E, Fluorescence detector

Experimental

Equipment

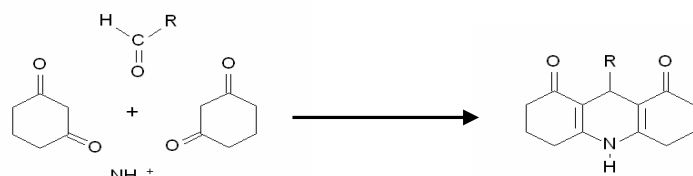
Eluent pump:	PU-2080
Reagent pump:	PU-2085
Degasser:	DG-2080-53
Autosampler:	AS-2057
Column oven:	CO-2060
Reaction oven:	RO-2061
Detector:	FP-2020

Conditions

Column:	Shodex RSpak KC-8116E (6.0 mmID x 250 mmL)
Eluent:	3 mM Perchloric acid
Flow rate:	1.0 mL/min
Reagent:	1,3-Cyclohexanedione in ammonium acetate buffer
Reagent flow rate:	0.4 mL/min
Column temp.:	60°C
Reaction temp.:	120°C
Wavelength:	Ex. 366 nm, Em. 440 nm, Gain x10
Injection volume:	50 µL
Standard sample:	Formaldehyde, Acetaldehyde 0.1 mg/L each

Result

Fig. 1 shows chemical reaction 1,3-Cyclohexanedione with aldehydes in post-column derivatization and Fig. 2 shows flow line of the system.



Decahydroacridine-1,8-dione

Fig. 1. Chemical reaction of 1,3-Cyclohexanedione with aldehydes.

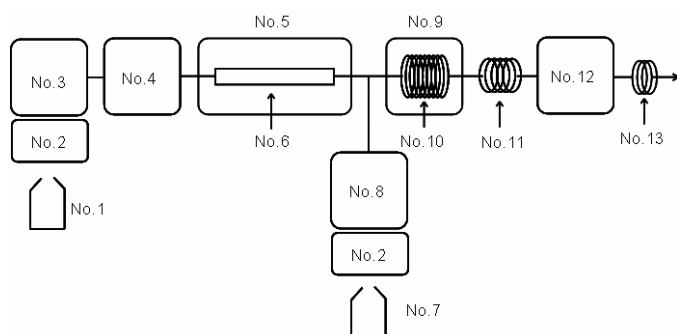


Fig. 2. Flow line diagram of the system.

- No.1 : Eluent
- No.2 : Degasser (DG-2080-53)
- No.3 : Pump for eluent (PU-2080)
- No.4 : Autosampler (AS-2057)
- No.5 : Column oven (CO-2060)
- No.6 : Column (Shodex RSpak KC-811 6E)
- No.7 : Reagent
- No.8 : Pump for reagent (PU-2085)
- No.9 : Reaction oven (RO-2061)
- No.10 : Reaction coil
- No.11 : Cooling coil
- No.12 : Fluorescence detector (FP-2020)
- No.13 : Backpressure coil

Fig. 3 shows chromatogram of the standard mixture of formaldehyde and acetaldehyde. Two components were separated within 8 min.

Figs. 4, 5 and 6 show chromatograms of drinking water, river water and rain water, respectively. The top chromatograms are of neat samples and the bottom ones are of samples spiked by adding 0.1 mg/L of formaldehyde and acetaldehyde. All samples were separated.

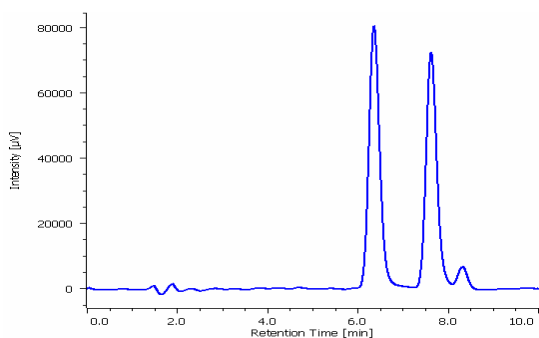


Fig. 3. Chromatogram of standard mixture of formaldehyde and acetaldehyde. 1: Formaldehyde, 2: Acetaldehyde (0.1 mg/L each)

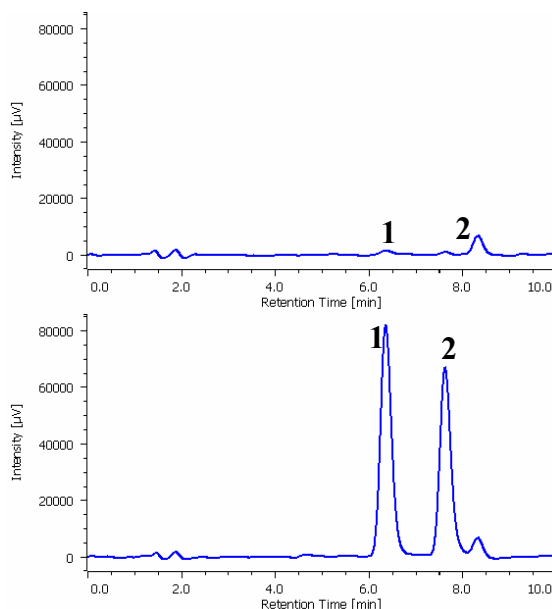


Fig. 4. Chromatogram of drinking water.

1: Formaldehyde, 2: Acetaldehyde

Preparation. Drinking water was filtered using 0.45 μm membrane filter.

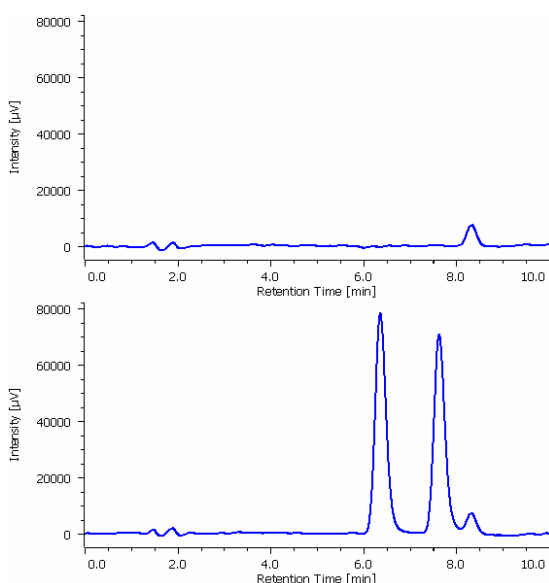


Fig. 5. Chromatogram of river water.

1: Formaldehyde, 2: Acetaldehyde

Preparation. River water was filtered with 0.45 μm membrane filter.

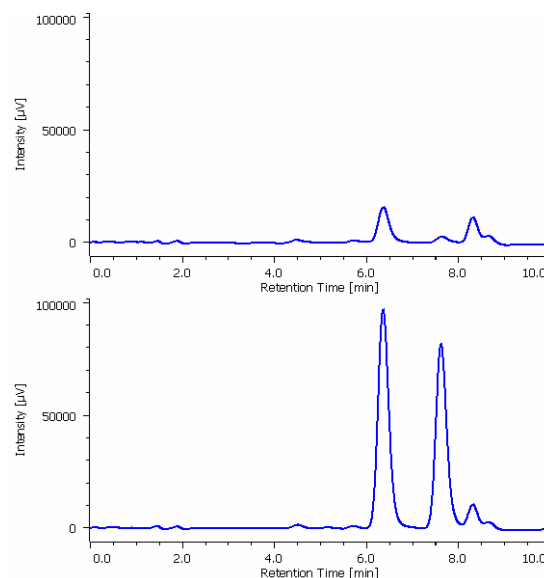


Fig. 6. Chromatogram of rain water.

1: Formaldehyde, 2: Acetaldehyde

Preparation. Rain water was filtered with 0.45 μm membrane filter.