

## Analysis of closantel

The permissible level of closantel, a veterinary anti-parasitic agent, residual in foodstuffs and the analytical methods used to determine it, are controlled according to food hygiene laws 1.

The structure of closantel is shown in Fig. 1.

Following the official method, the chromatogram from the analysis of a standard sample of closantel is shown in Fig. 2 and the absorption spectrum by photodiode array, in Fig. 3.

*Keywords : 1.closantel, 2.STD, 3.ODS, 4.UV-MD, 5.official method*

< References >

1)Ministry of public welfare ordinance 218 (26th December 1995)

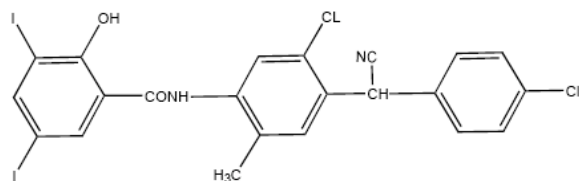


Fig. 1 Structure of closantel

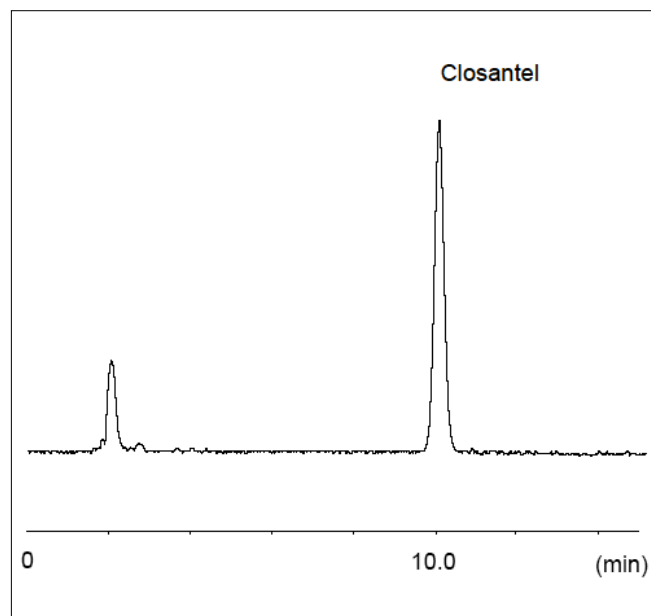


Fig.2 Chromatogram of closantel standard sample

### Conditions:

|                     |  |
|---------------------|--|
| Column:             | CrestPak C18S  |
| Eluent:             | CH <sub>3</sub> OH/20mM NaH <sub>2</sub> PO <sub>4</sub> (7/2) |
| Wavelength:         | 369nm (UV)<br>200 to 450nm (PDA)                               |
| Flow rate:          | 1.0ml/min  |
| Column temperature: | 50 degree celsius  |
| Sample:             | STD (1ppm)   |
| Injection volume:   | 50ul   |

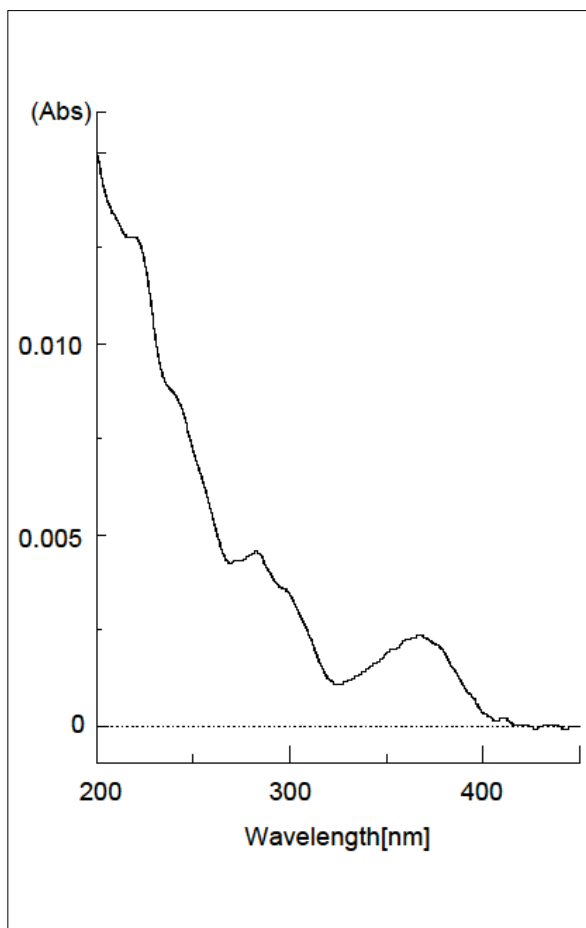


Fig. 3 UV spectrum of closantel